

September 2023

# Catchment Report

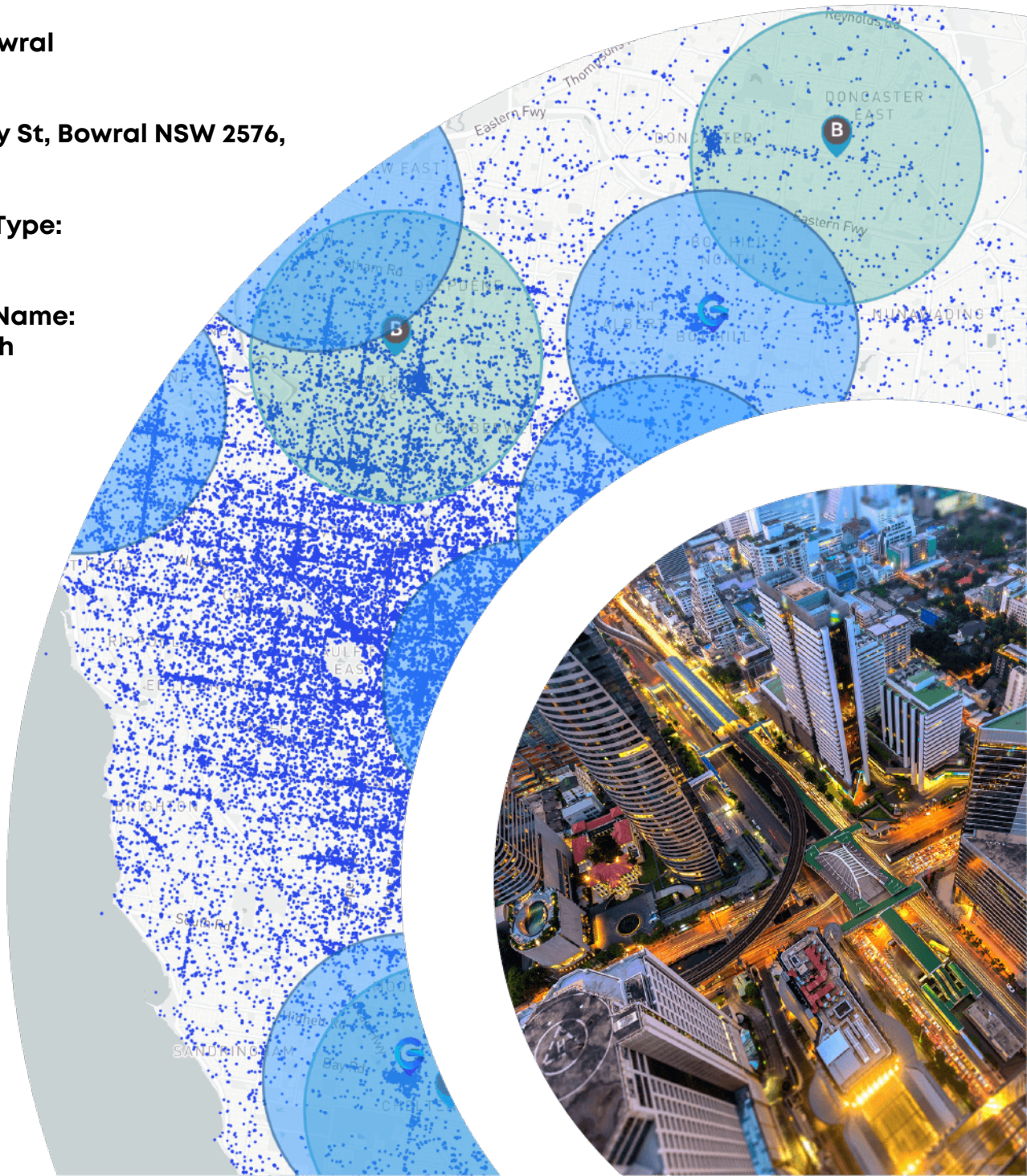
---

**Location:**  
**St Jude'S Bowral**

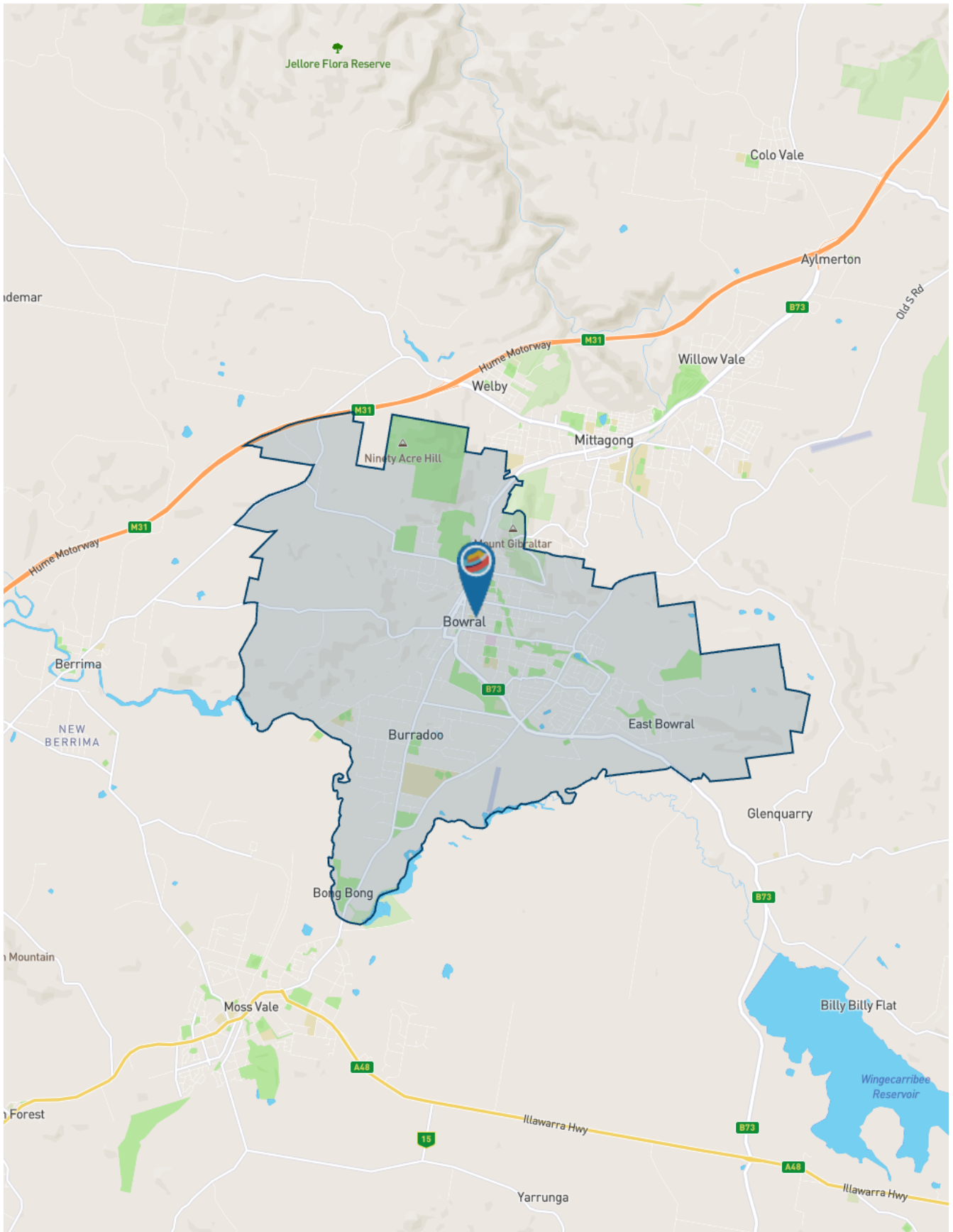
**Address:**  
**38 Bendooley St, Bowral NSW 2576,  
Australia**

**Catchment Type:**  
**Trade Area**

**Catchment Name:**  
**Bowral Parish**



# Defined Area Snapshot



**38 Bendooley St, Bowral NSW 2576, Australia**

**Trade Area: Bowral Parish**

# Demographics Snapshot

	Defined Area	New South Wales	Australia
<b>Population</b>			
Estimated Resident Population (2016)	13,218	7,732,858	24,190,907
Estimated Resident Population (2021)	13,539	8,093,815	25,688,079
Estimated Resident Population (2022)	13,500	8,156,386	25,996,144
Avg. Annual Growth Rate, 2016-2022	0.36%	0.91%	1.24%
<b>Age 2021</b>			
0 to 4	2.75%	5.73%	5.68%
5 to 17	14.06%	15.75%	15.84%
18 to 24	4.71%	8.26%	8.36%
25 to 64	39.32%	52.67%	52.94%
65 to 84	33.01%	15.44%	15.16%
85+	6.15%	2.16%	2.01%
Average age (years)	51.22	39.09	38.88
<b>Households 2021</b>			
No. of Private Dwellings	6,181	3,199,797	10,318,926
No. of Occupied Private Dwellings	5,563	2,900,219	9,275,075
Average Household Size	2.29	2.60	2.54
<b>Income &amp; Affluence 2021</b>			
Average Annual Income Per Capita (\$)	\$61,241	\$56,873	\$55,505
Average Annual Income Per Household (\$)	\$107,726	\$109,794	\$105,794
SEIFA Index (2021)	7.84	5.93	5.56
<b>Birthplace 2021</b>			
Australia	78.98%	70.26%	71.96%
UK	8.64%	3.73%	4.71%
South and Central Asia	1.59%	4.98%	4.67%
South East Asia	0.83%	4.38%	4.05%
North East Asia	0.76%	4.87%	3.41%
New Zealand and Oceania	2.05%	2.13%	2.58%
<b>Housing 2021</b>			
Owned	54.14%	32.06%	31.49%
Mortgage	25.16%	33.04%	35.54%
Renting	17.40%	33.12%	31.16%
Average monthly mortgage payment (\$)	\$2,484	\$2,330	\$2,059
Average Weekly rental payment (\$)	\$511	\$454	\$399
<b>Motor Vehicles 2021</b>			
No. of Motor Vehicles	9,746	4,817,297	16,065,118
Average No. of motor vehicles per household	1.78	1.69	1.76

Source: ABS Census 2021

## Location snapshot

Population Projections	Location	New South Wales	Australia
2011 (Census)	12,697	7,218,529	22,340,024
2012 (ABS)	12,794	7,304,244	22,733,465
2013 (ABS)	12,915	7,404,032	23,128,129
2014 (ABS)	13,001	7,508,353	23,475,686
2015 (ABS)	13,101	7,616,168	23,815,995
2016 (Census)	13,218	7,732,858	24,190,907
2017 (ABS)	13,317	7,850,871	24,594,202
2018 (ABS)	13,415	7,945,580	24,966,643
2019 (ABS)	13,472	8,034,305	25,340,217
2020 (ABS)	13,516	8,094,317	25,655,289
2021 (Census)	13,539	8,093,815	25,688,079
2022 (ABS)	13,500	8,156,386	25,996,144
2023 (Projection)	13,538	8,216,883	26,233,173
2024 (Projection)	13,591	8,305,793	26,555,502
2025 (Projection)	13,652	8,405,651	26,918,205
2026 (Projection)	13,713	8,506,701	27,286,020
2027 (Projection)	13,759	8,611,171	27,669,243
2028 (Projection)	13,805	8,715,642	28,052,467
2029 (Projection)	13,851	8,820,112	28,435,690
2030 (Projection)	13,897	8,924,585	28,818,916
2031 (Projection)	13,955	9,030,337	29,204,607

Source: ABS 2021, GapMaps 2022 2021

Child Care Supply And Demand	Location	New South Wales	Australia
Supply and Demand			
Long Day Care - Facilities (01 September 2023)	6	3,470	8,899
Long Day Care - Places (01 September 2023)	248	200,896	650,116
0-4 year olds (less than 5) (June 2022)	454	476,575	1,504,751
0-5 year olds (less than 6) (June 2022)	581	577,402	1,827,062
Ratio: 0-5 year olds / Places	2.34	2.87	2.81
Workers (2021) / Places	28.23	17.93	18.18
Fees			
Number of LDCs reporting fees (2023)	5	2,657	6,766
0-12 month olds daily fee (\$)	127.25	129.94	126.25
13-24 month olds daily fee (\$)	126.20	129.54	126.06
24-35 month olds daily fee (\$)	125.20	125.31	124.21
36+ month olds daily fee (\$)	124.20	121.93	121.76

Source: GapMaps 2023 2021

Aged Care Supply And Demand	Location	New South Wales	Australia
Supply (June 2023)			
Residential Aged Care - Facilities	3	849	2,644
Residential Aged Care - Beds	344	72,595	219,965



<b>Aged Care Supply And Demand</b>	<b>Location</b>	<b>New South Wales</b>	<b>Australia</b>
Demand (June 2022)			
65-74 year olds	2,328	792,810	2,501,352
75-84 year olds	2,029	451,885	1,386,994
85+ year olds	807	173,075	511,521
Total Demand (2%:65-75, 8%:75-85, 18%:85+)	351	81,596	246,795
Balance			
Bed Shortage (Demand - Supply)	7	8,999	26,820
Aged Care Approvals Round (2020)			
ACAR Facilities	0	45	139
ACAR Provisionally Allocated Places	0	536	1,712

Source: GapMaps 2022 2021

<b>Gym Supply And Demand</b>	<b>Location</b>	<b>New South Wales</b>	<b>Australia</b>
Major Gyms (July 2023)	5	1,031	3,353
Potential Gym Users (June 2022)	1,409	1,071,891	3,537,174
Potential Gym Users/Major Gyms	281.80	1,039.66	1,054.93

Source: GapMaps 2022 2021

<b>Gp Supply And Demand</b>	<b>Location</b>	<b>New South Wales</b>	<b>Australia</b>
Total Medical Centres (June 2022)	10	3,041	8,847
Large (10+ GPs)	0	87	418
Mid (4 to 10 GPs)	3	480	1,815
Small (1 to 4 GPs)	7	2,474	6,614
Total GPs (June 2022)	29	8,564	29,913
GP Visits 2022 (Medicare)	72,063	34,244,385	102,492,244
GP Visits Per Capita 2022 (Medicare)	5.34	4.20	3.94
GP Visits / Medical Centres	7,206.30	11,260.90	11,584.97
GP Visits / GPs	2,484.93	3,998.64	3,426.34

Source: GapMaps 2022 2021

<b>Dental Supply And Demand</b>	<b>Location</b>	<b>New South Wales</b>	<b>Australia</b>
Total Dental Clinics	12	2,751	7,557
Population 2022	13,500	8,156,386	25,996,144
Dental Spending Per Capita (AUD)	349.62	263.69	254.67
Total Resident Dental Spending (AUD Mil.)	4.72	2,150.76	6,620.56
Dental Spending / Dental Clinics (AUD)	393,326.33	781,808.71	876,082.74

Source: GapMaps 2022 2021

<b>Total Household Spending (2022, Aud Mil.)</b>	<b>Location</b>	<b>%</b>	<b>New South Wales</b>	<b>%</b>	<b>Australia</b>	<b>%</b>
Retail	234.25	26.98%	123,374.66	26.45%	426,162.31	28.65%
Housing	89.99	10.37%	57,038.65	12.23%	174,550.28	11.74%
Health	31.16	3.59%	13,043.11	2.80%	40,989.68	2.76%
Fuel	14.88	1.71%	8,333.85	1.79%	26,976.12	1.81%
Motor Vehicles (incl. motor cycle)	20.03	2.31%	10,996.07	2.36%	34,325.10	2.31%
MV Parts and Accessories	6.06	0.70%	3,225.78	0.69%	10,521.57	0.71%

Total Household Spending (2022, Aud Mil.)	Location	%	New South Wales	%	Australia	%
Tyres and Vehicle Servicing	7.66	0.88%	3,514.45	0.75%	11,484.67	0.77%
Cinemas	1.13	0.13%	676.18	0.14%	2,109.31	0.14%
Liquor - on licenced premises	5.05	0.58%	3,461.33	0.74%	10,071.56	0.68%
Health and fitness studio charges	1.09	0.13%	807.69	0.17%	2,532.85	0.17%
Sports Fees, Lessons and Hire	4.36	0.50%	1,984.48	0.43%	6,271.83	0.42%
Gambling	26.37	3.04%	13,036.25	2.79%	33,715.67	2.27%
Other Non Retail	426.07	49.08%	227,015.68	48.66%	707,658.68	47.58%
<b>TOTALS:</b>	<b>868.1000000000001</b>		<b>466,508.18</b>		<b>1,487,369.6,300,000,001</b>	

Source: GapMaps 2022 2021

Household Spending 2022 (Retail)	Location	New South Wales	Australia
Total Spend (AUD Mil)			
Food and Groceries	87.18	47,988.31	159,396.73
Packaged Liquor	13.72	7,170.78	22,040.14
Food Catering	25.06	14,360.75	51,848.65
Apparel	21.15	11,262.11	38,919
Household Goods	48.89	23,495.89	83,818.78
Leisure Retail	8.93	4,666.14	18,545.14
General Retail	19.72	9,844.05	32,249.77
Retail Services	9.61	4,500.23	18,617.59
Total Retail	234.26	123,288.25	425,435.80
Spend Per Capita (AUD)			
Food and Groceries	6,457.46	5,883.53	6,131.55
Packaged Liquor	1,016.28	879.16	847.82
Food Catering	1,856.36	1,760.68	1,994.47
Apparel	1,566.69	1,380.77	1,497.11
Household Goods	3,621.46	2,880.67	3,224.28
Leisure Retail	661.67	572.08	713.38
General Retail	1,460.53	1,206.91	1,240.56
Retail Services	711.80	551.74	716.17
Total Retail	17,352.26	15,115.55	16,365.34

Source: GapMaps 2022 2021

2021 Population	Location	%	New South Wales	%	Australia	%
Total Persons Males	6,339	46.43%	3,984,193	49.36%	12,545,480	49.35%
Total Persons Females	7,315	53.57%	4,087,467	50.64%	12,876,178	50.65%
<b>TOTALS:</b>	<b>13,654</b>		<b>8,071,660</b>		<b>25,421,658</b>	

Source: ABS Census 2021

2021 Business Counts By Industry	Location	New South Wales	Australia
Total	1,812	817,191	2,401,881
Businesses by Count of Employees			
Non-Employing	974	457,358	1,410,175
1 to 4	649	267,660	711,047
5 to 19	168	73,093	220,660
20 to 199	36	17,842	55,808
200+	0	1,686	4,356

2021 Business Counts By Industry	Location	New South Wales	Australia
Businesses by Turnover (AUD)			
Less than 2 Mil.	1,711	758,878	2,234,147
2 to 5 Mil.	71	32,757	96,096
5 to 10 Mil.	24	11,931	34,255
More than 10 Mil.	12	14,379	38,078
Businesses by Industry			
Agriculture, Forestry and Fishing	55	52,896	173,008
Mining	3	1,580	8,067
Manufacturing	65	27,469	86,910
Electricity, Gas, Water and Waste Services	3	2,641	8,081
Construction	233	137,798	410,598
Wholesale Trade	72	29,458	82,448
Retail Trade	138	49,059	145,183
Accommodation and Food Services	98	35,629	104,897
Transport, Postal and Warehousing	56	63,573	194,397
Information Media and Telecommunications	34	9,609	23,848
Financial and Insurance Services	105	43,232	114,078
Rental, Hiring and Real Estate Services	209	92,365	272,683
Professional, Scientific and Technical Services	346	114,970	316,291
Administrative and Support Services	77	37,060	107,115
Public Administration and Safety	3	2,640	7,033
Education and Training	27	13,836	36,844
Health Care and Social Assistance	174	54,081	159,136
Arts and Recreation Services	35	11,704	33,386
Other Services	79	36,470	114,611
Currently Unknown	0	1,121	3,267

Source: ABS Business Census 2021

2021 Workers (Working Within Catchment)	Location	%	New South Wales	%	Australia	%
Managers	886	12.66%	534,772	14.84%	1,645,361	13.92%
Professionals	2,002	28.60%	950,821	26.39%	2,886,435	24.42%
Technicians and Trades Workers	836	11.94%	434,497	12.06%	1,554,215	13.15%
Community and Personal Service Workers	1,036	14.80%	389,596	10.81%	1,382,161	11.69%
Clerical and Administrative Workers	937	13.38%	476,530	13.23%	1,525,218	12.90%
Sales Workers	736	10.51%	294,684	8.18%	986,660	8.35%
Machinery Operators and Drivers	107	1.53%	221,435	6.15%	755,536	6.39%
Labourers	461	6.58%	300,216	8.33%	1,086,175	9.19%
<b>TOTALS:</b>	<b>7,001</b>		<b>3,602,551</b>		<b>11,821,761</b>	

Source: ABS, GapMaps 2022 2021

2021 Seifa	Location	New South Wales	Australia
SEIFA Score (Advantaged & Disadvantaged)	7.84	5.93	5.56

Source: ABS Census 2021

2021 Generation (No. Of Residents)	Location	%	New South Wales	%	Australia	%
Gen Alpha (2011-2021, 0-9)	1,012	7.65%	952,833	12.03%	2,996,863	12.01%
Gen Z (1996-2010, 10-24)	1,866	14.11%	1,430,457	18.06%	4,550,815	18.24%
Millennials (Gen Y) (1981-1995, 25-39)	1,136	8.59%	1,697,206	21.43%	5,392,957	21.62%
Generation X (1966-1980, 40-54)	2,158	16.32%	1,520,997	19.21%	4,839,013	19.40%
Baby boomers (1946-1965, 55-74)	4,178	31.59%	1,713,279	21.64%	5,351,387	21.45%
Interwar (before 1945, 75+)	2,874	21.73%	603,827	7.63%	1,818,679	7.29%
<b>TOTALS:</b>	<b>13,224</b>		<b>7,918,599</b>		<b>24,949,714</b>	

Source: ABS Census 2021

2021 Land Use (Sq.m)	Location	%	New South Wales	%	Australia	%
Residential	17,656,700	31.77%	5,925,263,100	0.74%	135,703,327,900	1.77%
Industrial	459,000	0.83%	444,189,000	0.06%	3,487,998,700	0.05%
Commercial	357,600	0.64%	249,182,300	0.03%	991,956,800	0.01%
Education	756,900	1.36%	179,248,300	0.02%	634,577,800	0.01%
Hospital/Medical	49,900	0.09%	24,631,600	0%	74,657,600	0%
Transport	0	0%	84,719,900	0.01%	447,183,900	0.01%
Water	0	0%	5,393,349,900	0.67%	42,045,603,900	0.55%
Parkland	2,442,200	4.39%	79,741,699,400	9.96%	645,898,854,000	8.40%
Other	6,538,600	11.77%	38,470,267,600	4.80%	975,094,447,500	12.68%
Primary Production	27,311,100	49.15%	670,285,108,000	83.70%	5,883,717,042,500	76.53%
<b>TOTALS:</b>	<b>55,572,000</b>		<b>800,797,659,100</b>		<b>7,688,095,650,600</b>	

Source: ABS Census, GapMaps 2022 2021

2021 Aboriginal And Or Torres Strait Islander	Location	%	New South Wales	%	Australia	%
Aboriginal Persons	115	95.04%	265,607	97.14%	737,221	92.58%
Torres Strait Islander Persons	3	2.48%	3,421	1.25%	27,819	3.49%
Both Aboriginal and Torres Strait Islander Persons	3	2.48%	4,409	1.61%	31,298	3.93%
<b>TOTALS:</b>	<b>121</b>		<b>273,437</b>		<b>796,338</b>	

Source: ABS Census 2021

2021 Age Profile (No. Of Residents, 5 Year Bands)	Location	%	New South Wales	%	Australia	%
0 to 4	453	3.33%	467,838	5.81%	1,463,922	5.77%
5 to 9	657	4.84%	501,017	6.22%	1,585,755	6.25%
10 to 14	825	6.07%	501,516	6.22%	1,588,570	6.26%
15 to 19	701	5.16%	457,703	5.68%	1,457,542	5.74%
20 to 24	453	3.33%	496,261	6.16%	1,579,448	6.22%
25 to 29	375	2.76%	555,826	6.90%	1,771,359	6.98%
30 to 34	331	2.44%	585,664	7.27%	1,852,395	7.30%
35 to 39	529	3.89%	579,700	7.20%	1,838,111	7.24%
40 to 44	618	4.55%	522,486	6.49%	1,648,965	6.50%
45 to 49	776	5.71%	516,125	6.41%	1,635,054	6.44%
50 to 54	877	6.46%	500,162	6.21%	1,611,266	6.35%
55 to 59	836	6.15%	489,580	6.08%	1,540,880	6.07%
60 to 64	916	6.74%	472,080	5.86%	1,469,058	5.79%
65 to 69	1,042	7.67%	415,880	5.16%	1,297,806	5.11%



2021 Age Profile (No. Of Residents, 5 Year Bands)	Location	%	New South Wales	%	Australia	%
70 to 74	1,314	9.67%	371,883	4.62%	1,159,974	4.57%
75 to 79	1,196	8.80%	267,590	3.32%	819,908	3.23%
80 to 84	862	6.35%	182,495	2.27%	551,194	2.17%
85 to 89	542	3.99%	108,615	1.35%	320,623	1.26%
90 to 94	206	1.52%	51,487	0.64%	149,965	0.59%
95 to 99	60	0.44%	11,573	0.14%	33,895	0.13%
100 yr over	15	0.11%	1,072	0.01%	3,229	0.01%
<b>TOTALS:</b>	<b>13,584</b>		<b>8,056,553</b>		<b>25,378,919</b>	

Source: ABS Census 2021

2021 Age Profile (No. Of Residents, Edu. Bands)	Location	New South Wales	Australia
Population Aged 0 to 4	368	459,387	1,435,501
Population Aged 5 to 11	966	692,447	2,190,301
Population Aged 12 to 17	914	569,738	1,809,832
Population Aged 18 to 39	1,865	2,382,908	7,573,909
Population Aged 40 +	9,260	3,911,028	12,241,817
Population Aged 50 +	7,866	2,872,417	8,957,798
Population Aged 60 +	6,153	1,882,675	5,805,652
Population Aged 70 +	4,195	994,715	3,038,788

Source: ABS Census 2021

Age Projection: 0 To 5 Years	Location	New South Wales	Australia
2022	581	577,402	1,827,062
2023	577	580,488	1,842,831
2024	572	586,584	1,866,951
2025	570	593,585	1,893,368
2026	569	600,734	1,920,111
2027	554	605,055	1,944,956
2028	551	612,724	1,976,837
2029	545	619,777	2,007,945
2030	543	626,437	2,037,561
2031	541	631,869	2,059,488

Source: GapMaps 2022 2021

Age Projection: 6 To 11 Years	Location	New South Wales	Australia
2022	852	609,953	1,950,685
2023	828	613,870	1,967,442
2024	816	620,172	1,991,231
2025	809	627,512	2,017,717
2026	808	635,515	2,045,498
2027	769	639,272	2,070,432
2028	754	647,086	2,101,268
2029	730	654,152	2,131,003
2030	721	662,429	2,161,773
2031	718	669,888	2,184,073

Source: GapMaps 2022 2021

Age Projection: 12 To 17 Years	Location	New South Wales	Australia
2022	917	580,351	1,861,814
2023	914	582,883	1,876,096
2024	913	587,494	1,896,598
2025	911	592,909	1,920,409
2026	907	598,712	1,945,710
2027	901	603,601	1,971,074
2028	904	610,013	1,997,837
2029	901	616,134	2,024,099
2030	903	622,169	2,049,388
2031	903	626,033	2,065,270

Source: GapMaps 2022 2021

2016 - 2021 Age Profile Change	Location	New South Wales	Australia
Age 2021 (no.)			
0 to 4	368	459,386	1,435,500
5 to 17	1,880	1,262,184	4,000,132
18 to 24	630	661,719	2,112,045
25 to 64	5,258	4,221,621	13,367,086
65 to 84	4,414	1,237,850	3,828,884
85+	1,685	355,241	1,058,905
Total	13,373	8,015,508	25,251,360
Age 2016 (no.)			
0 to 4	464	458,248	1,442,455
5 to 17	1,971	1,171,752	3,692,892
18 to 24	604	660,743	2,116,892
25 to 65	5,229	3,935,816	12,368,049
65 to 85	3,982	1,048,578	3,182,815
85+	1,312	312,724	912,351
Total	12,891	7,432,705	23,258,912
Age Change (2016 - 2021)			
0 to 4	-96	1,138	-6955
5 to 17	-91	90,432	307,240
18 to 24	26	976	-4847
25 to 65	29	285,805	999,037
65 to 85	432	189,272	646,069
85+	373	42,517	146,554
Total	482	582,803	1,992,448
Age 2021 (%)			
0 to 4	2.75%	5.73%	5.68%
5 to 17	14.06%	15.75%	15.84%
18 to 24	4.71%	8.26%	8.36%
25 to 64	39.32%	52.67%	52.94%
65 to 84	33.01%	15.44%	15.16%
85+	12.60%	4.43%	4.19%
Average age (years)	51.22	39.09	38.88
Age 2016 (%)			
0 to 4	3.60%	6.17%	6.20%
5 to 17	15.29%	15.76%	15.88%
18 to 24	4.69%	8.89%	9.10%
25 to 65	40.56%	52.95%	53.18%

2016 - 2021 Age Profile Change	Location	New South Wales	Australia
65 to 85	30.89%	14.11%	13.68%
85+	10.18%	4.21%	3.92%
Average age (years)	48.63	38.29	37.97

Source: ABS Census 2021

2021 Occupation Summary	Location	New South Wales	Australia
Workforce White Collar	79.27%	73.46%	71.28%
Workforce Blue Collar	20.73%	26.54%	28.72%
Total Unemployed at Census Date	135	188,877	644,918
Total Labour Force	5,611	3,873,975	12,694,930
Unemployment rate at Census date	2.41%	4.88%	5.08%

Source: ABS Census 2021

2021 Occupation (No. Of Employed Residents Aged 15+)	Location	%	New South Wales	%	Australia	%
Managers	1,049	19.15%	536,457	14.58%	1,644,648	13.67%
Professionals	1,616	29.51%	952,522	25.90%	2,887,244	23.99%
Technicians & trades workers	616	11.25%	436,496	11.87%	1,554,354	12.92%
Community & personal service workers	523	9.55%	389,562	10.59%	1,380,238	11.47%
Clerical & administrative workers	632	11.54%	480,185	13.05%	1,524,902	12.67%
Sales workers	459	8.38%	294,631	8.01%	985,440	8.19%
Machinery operators & drivers	183	3.34%	221,674	6.03%	754,047	6.27%
Labourers	320	5.84%	300,359	8.17%	1,084,983	9.02%
Occupation inadequately described/ Not stated	79	1.44%	66,378	1.80%	218,775	1.82%
<b>TOTALS:</b>	<b>5,477</b>		<b>3,678,264</b>		<b>12,034,631</b>	

Source: ABS Census 2021

2021 Australian Defence Force (No. Of Residents Aged 15+)	Location	%	New South Wales	%	Australia	%
Currently serving in the regular service only	0	0%	14,835	0.22%	50,520	0.24%
Currently serving in the reserve service only	7	0.06%	2,979	0.05%	12,610	0.06%
Previously served (and not currently serving)	503	4.31%	126,114	1.91%	492,955	2.37%
Has never served	10,547	90.31%	6,050,311	91.76%	18,953,346	91.30%
Not stated	622	5.33%	399,515	6.06%	1,249,324	6.02%
<b>TOTALS:</b>	<b>11,679</b>		<b>6,593,754</b>		<b>20,758,755</b>	

Source: 2021 Census 2021

2021 Method Of Travel To Work (No. Of Employed Res Aged 15+)	Location	%	New South Wales	%	Australia	%
Train Only	6	0.11%	59,947	1.65%	162,527	1.37%
Train and One Other Method	0	0%	29,456	0.81%	89,967	0.76%
Train and two other methods	0	0%	145	0%	1,388	0.01%
Bus Only	6	0.11%	30,411	0.84%	162,732	1.37%
Bus and One Other Method (not train)	0	0%	2,107	0.06%	18,168	0.15%
Bus and two other methods (excludes train)	0	0%	96	0%	1,075	0.01%

2021 Method Of Travel To Work (No. Of Employed Res Aged 15+)	Location	%	New South Wales	%	Australia	%
Ferry	0	0%	694	0.02%	2,417	0.02%
Tram/light rail	0	0%	963	0.03%	26,430	0.22%
Taxi/ride-share service	0	0%	1,818	0.05%	14,225	0.12%
Car, as driver	2,498	46.81%	1,587,503	43.75%	6,347,244	53.48%
Car, as passenger	229	4.29%	115,764	3.19%	464,669	3.92%
Truck	34	0.64%	20,969	0.58%	59,776	0.50%
Motorbike/scooter	0	0%	9,649	0.27%	33,325	0.28%
Bicycle	6	0.11%	10,438	0.29%	66,127	0.56%
Other	10	0.19%	11,622	0.32%	56,588	0.48%
Walked only	194	3.64%	88,968	2.45%	294,821	2.48%
Other Two Methods (Not Train or Bus)	7	0.13%	16,872	0.46%	77,433	0.65%
Other three methods (no train or bus)	0	0%	86	0%	631	0.01%
Worked at home	1,700	31.85%	1,140,854	31.44%	2,529,760	21.31%
Did not go to work	611	11.45%	487,612	13.44%	1,417,290	11.94%
Method of travel to work not stated	36	0.67%	12,489	0.34%	42,009	0.35%
<b>TOTALS:</b>	<b>5,337</b>		<b>3,628,463</b>		<b>11,868,602</b>	

Source: 2021 Census 2021

2021 Place Of Birth (No. Of Residents)	Location	New South Wales	Australia
Australia	10,027	5,277,654	17,019,978
UK	1,097	279,864	1,113,326
New Zealand and Oceania	260	159,853	610,046
North West Europe	138	44,738	161,462
Southern and Eastern Europe	112	124,459	388,601
MENA	42	171,572	303,072
North East Asia	97	366,065	805,724
South East Asia	106	328,996	957,349
Southern and Central Asia	202	374,166	1,103,489
Americas	165	70,752	184,821
Other	445	309,510	984,273
<b>TOTALS:</b>	<b>12,691</b>		<b>23,632,141</b>

Source: ABS Census 2021

2021 Language Spoken At Home (No Of Residents)	Location	%	New South Wales	%	Australia	%
English only	11,999	92.76%	5,457,918	70.92%	18,303,070	75.41%
Afrikaans	22	0.17%	7,609	0.10%	44,580	0.18%
Arabic	10	0.08%	225,407	2.93%	361,377	1.49%
Australian Indigenous Languages	0	0%	4,296	0.06%	74,658	0.31%
Chinese languages Cantonese	27	0.21%	147,420	1.92%	289,736	1.19%
Chinese languages Mandarin	44	0.34%	268,965	3.49%	679,363	2.80%
Chinese languages Other	0	0%	0	0%	0	0%
Croatian	20	0.15%	18,596	0.24%	48,049	0.20%
French	23	0.18%	21,074	0.27%	62,297	0.26%
German	32	0.25%	17,406	0.23%	60,609	0.25%
Greek	45	0.35%	76,045	0.99%	221,961	0.91%
Indo Aryan Languages	171	1.32%	343,467	4.46%	953,551	3.93%
Italian	76	0.59%	61,098	0.79%	218,487	0.90%

2021 Language Spoken At Home (No Of Residents)	Location	%	New South Wales	%	Australia	%
Japanese	18	0.14%	16,437	0.21%	53,604	0.22%
Khmer	0	0%	12,157	0.16%	37,680	0.16%
Korean	18	0.14%	61,004	0.79%	111,681	0.46%
Macedonian	11	0.09%	26,876	0.35%	62,847	0.26%
Malaysian	28	0.22%	20,265	0.26%	76,668	0.32%
Persian	16	0.12%	25,314	0.33%	68,340	0.28%
Polish	9	0.07%	11,217	0.15%	38,821	0.16%
Portuguese	4	0.03%	28,626	0.37%	62,169	0.26%
Russian	16	0.12%	18,225	0.24%	49,392	0.20%
Samoan	0	0%	16,240	0.21%	46,286	0.19%
Serbian	20	0.15%	21,455	0.28%	52,706	0.22%
SE Asia Austronesian Languages	127	0.98%	275,309	3.58%	758,634	3.13%
Spanish	45	0.35%	69,533	0.90%	163,722	0.67%
Tamil	0	0%	37,375	0.49%	91,870	0.38%
Thai	14	0.11%	25,713	0.33%	58,467	0.24%
Turkish	3	0.02%	22,491	0.29%	61,474	0.25%
Vietnamese	16	0.12%	116,056	1.51%	315,595	1.30%
Other	122	0.94%	242,488	3.15%	842,688	3.47%
<b>TOTALS:</b>	<b>12,936</b>		<b>7,696,082</b>		<b>24,270,382</b>	

Source: ABS Census 2021

2021 Religious Affiliation Sum (No Of Residents)	Location	New South Wales	Australia
Catholic	2,886	1,807,398	5,075,227
Other Christian	4,776	2,003,758	5,968,122
Buddhism	111	220,632	608,930
Hinduism	133	271,930	678,524
Islam	18	347,791	808,531
Judaism	58	37,961	92,366
Other Religions	51	81,380	306,713
No Religion	4,558	2,670,486	9,857,413
Not stated	884	574,358	1,847,762
<b>TOTALS:</b>	<b>13,475</b>		<b>25,243,588</b>

Source: ABS Census 2021

2021 Religious Affiliation (No Of Residents)	Location	%	New South Wales	%	Australia	%
Buddhism	111	0.82%	220,632	2.75%	608,930	2.41%
Christianity Anglican	2,991	22.20%	960,272	11.98%	2,496,260	9.89%
Christianity Assyrian Apostolic	0	0%	14,887	0.19%	18,509	0.07%
Christianity Baptist	107	0.79%	91,116	1.14%	340,839	1.35%
Christianity Brethren	132	0.98%	6,996	0.09%	17,424	0.07%
Christianity Catholic	2,886	21.42%	1,807,398	22.55%	5,075,227	20.11%
Christianity Churches of Christ	20	0.15%	4,130	0.05%	29,603	0.12%
Christianity Eastern Orthodox	133	0.99%	200,128	2.50%	528,020	2.09%
Christianity Jehovahs Witnesses	48	0.36%	21,130	0.26%	76,718	0.30%
Christianity Latter day Saints	11	0.08%	12,932	0.16%	51,306	0.20%
Christianity Lutheran	28	0.21%	12,695	0.16%	132,922	0.53%
Christianity Oriental Orthodox	0	0%	29,475	0.37%	57,316	0.23%



2021 Religious Affiliation (No Of Residents)	Location	%	New South Wales	%	Australia	%
Christianity Other Protestant	15	0.11%	31,093	0.39%	98,753	0.39%
Christianity Pentecostal	62	0.46%	69,262	0.86%	249,249	0.99%
Christianity Presbyterian and Reformed	364	2.70%	152,431	1.90%	410,411	1.63%
Christianity Salvation Army	5	0.04%	8,354	0.10%	26,034	0.10%
Christianity Seventh day Adventist	8	0.06%	20,047	0.25%	55,620	0.22%
Christianity Uniting Church	522	3.87%	171,183	2.14%	670,751	2.66%
Christianity Christian nfd	330	2.45%	193,309	2.41%	687,102	2.72%
Christianity Other Christian	0	0%	4,318	0.05%	21,285	0.08%
Hinduism	133	0.99%	271,930	3.39%	678,524	2.69%
Islam	18	0.13%	347,791	4.34%	808,531	3.20%
Judaism	58	0.43%	37,961	0.47%	92,366	0.37%
Australian Aboriginal Traditional Religions	0	0%	875	0.01%	6,500	0.03%
Sikhism	17	0.13%	46,125	0.58%	207,303	0.82%
Other religious groups	34	0.25%	34,380	0.43%	92,910	0.37%
No Religion	4,494	33.35%	2,643,966	32.98%	9,767,744	38.69%
Secular Beliefs	39	0.29%	17,465	0.22%	58,157	0.23%
Other Beliefs	25	0.19%	9,055	0.11%	31,512	0.12%
Religious affiliation not stated	884	6.56%	574,358	7.17%	1,847,762	7.32%
<b>TOTALS:</b>	<b>13,475</b>		<b>8,015,694</b>		<b>25,243,588</b>	

Source: ABS Census 2021

2021 Weekly Personal Income (No. Of Residents Aged 15+)	Location	%	New South Wales	%	Australia	%
Negative Nil income	857	7.32%	606,096	9.19%	1,816,871	8.75%
1 to 149	467	3.99%	199,445	3.02%	678,506	3.27%
150 to 299	518	4.43%	301,538	4.57%	1,004,659	4.84%
300 to 399	833	7.12%	497,373	7.54%	1,573,516	7.58%
400 to 499	952	8.14%	497,157	7.54%	1,581,390	7.62%
500 to 649	848	7.25%	472,281	7.16%	1,510,676	7.27%
650 to 799	840	7.18%	453,360	6.87%	1,438,104	6.93%
800 to 999	897	7.67%	518,038	7.86%	1,680,000	8.09%
1,000 to 1,249	1,034	8.84%	580,152	8.80%	1,865,603	8.98%
1,250 to 1,499	693	5.92%	436,768	6.62%	1,402,803	6.76%
1,500 to 1,749	592	5.06%	380,006	5.76%	1,228,760	5.92%
1,750 to 1,999	451	3.85%	288,883	4.38%	907,141	4.37%
2,000 to 2,999	869	7.43%	519,601	7.88%	1,575,054	7.59%
3,000 to 3,499	276	2.36%	123,287	1.87%	359,278	1.73%
3,500 or more	733	6.26%	246,201	3.73%	656,956	3.16%
Not stated	841	7.19%	474,524	7.20%	1,486,032	7.16%
<b>TOTALS:</b>	<b>11,701</b>		<b>6,594,710</b>		<b>20,765,349</b>	

Source: ABS Census 2021

2021 Weekly Household Income (No. Of Households)	Location	%	New South Wales	%	Australia	%
Negative Nil	118	2.14%	52,603	1.83%	154,564	1.69%
1 to 149	51	0.92%	12,795	0.45%	41,224	0.45%
150 to 299	73	1.32%	29,085	1.01%	95,168	1.04%
300 to 399	64	1.16%	60,572	2.11%	191,631	2.09%

2021 Weekly Household Income (No. Of Households)	Location	%	New South Wales	%	Australia	%
400 to 499	321	5.82%	155,923	5.44%	506,446	5.52%
500 to 649	224	4.06%	111,305	3.88%	372,498	4.06%
650 to 799	351	6.36%	161,887	5.64%	532,331	5.80%
800 to 999	362	6.56%	162,594	5.67%	547,732	5.97%
1,000 to 1,249	408	7.40%	190,490	6.64%	635,731	6.93%
1,250 to 1499	436	7.90%	195,849	6.83%	654,616	7.14%
1,500 to 1,749	254	4.60%	153,358	5.35%	516,095	5.63%
1,750 to 1,999	302	5.47%	152,103	5.30%	503,784	5.49%
2,000 to 2,499	499	9.04%	320,654	11.18%	1,043,106	11.37%
2,500 to 2,999	337	6.11%	203,904	7.11%	661,828	7.22%
3,000 to 3,499	274	4.97%	185,306	6.46%	580,445	6.33%
3,500 to 3,999	182	3.30%	118,053	4.12%	359,155	3.92%
4,000 or more	931	16.88%	424,425	14.80%	1,150,468	12.54%
Partial income stated	231	4.19%	130,209	4.54%	478,368	5.22%
All incomes not stated	99	1.79%	47,531	1.66%	147,528	1.61%
<b>TOTALS:</b>	<b>5,517</b>		<b>2,868,646</b>		<b>9,172,718</b>	

Source: ABS Census 2021

2016 - 2021 Income Change	Location	New South Wales	Australia
Income 2021 (Annual)			
Per Capita (\$)	\$ 61,241	\$ 56,873	\$ 55,505
Per Household (\$)	\$ 107,726	\$ 109,794	\$ 105,794
Share of Households with Income over \$130,000	42.86%	46.54%	44.40%
Income 2016 (Annual)			
Per Capita (\$)	\$ 52,475	\$ 49,212	\$ 48,424
Per Household (\$)	\$ 92,010	\$ 94,432	\$ 90,887
Share of Households with Income over \$130,000	34.29%	37.56%	35.41%
Income Change (2016 - 2021)			
Per Capita (\$)	\$ 8,766	\$ 7,661	\$ 7,081
Per Household (\$)	\$ 15,716	\$ 15,362	\$ 14,907
Share of Households with Income over \$130,000	8.57%	8.98%	9%

Source: ABS Census 2021

2021 Monthly Mortgage (No. Of Occupied Mortgaged Dwellings)	Location	%	New South Wales	%	Australia	%
\$0 to 299	84	6.46%	40,482	4.49%	136,912	4.40%
\$300 to 449	6	0.46%	8,596	0.95%	39,306	1.26%
\$450 to 599	8	0.61%	7,516	0.83%	34,692	1.11%
\$600 to 799	22	1.69%	17,717	1.97%	83,480	2.68%
\$800 to 999	39	3%	27,587	3.06%	128,338	4.12%
\$1,000 to 1,399	121	9.30%	93,545	10.39%	427,210	13.72%
\$1,400 to 1,799	101	7.76%	111,930	12.43%	509,954	16.37%
\$1,800 to 2,399	222	17.06%	179,568	19.94%	674,025	21.64%
\$2,400 to 2,999	156	11.99%	116,781	12.97%	337,882	10.85%
\$3,000 to 3,999	222	17.06%	120,983	13.43%	302,721	9.72%
\$4,000 and over	224	17.22%	120,237	13.35%	257,664	8.27%
Not stated	96	7.38%	55,684	6.18%	182,150	5.85%

2021 Monthly Mortgage (No. Of Occupied Mortgaged Dwellings)	Location	%	New South Wales	%	Australia	%
<b>TOTALS:</b>	<b>1,301</b>		<b>900,626</b>		<b>3,114,334</b>	

Source: ABS Census 2021

2021 Weekly Rental (No. Of Occupied Rented Dwellings)	Location	%	New South Wales	%	Australia	%
\$0 to 74	0	0%	3,079	0.34%	21,453	0.79%
\$75 to 99	6	0.74%	5,269	0.59%	20,881	0.77%
\$100 to 149	0	0%	39,912	4.44%	132,004	4.89%
\$150 to 199	43	5.30%	39,289	4.37%	126,810	4.70%
\$200 to 224	14	1.73%	24,794	2.76%	89,313	3.31%
\$225 to 274	38	4.69%	48,446	5.39%	202,986	7.52%
\$275 to 349	42	5.18%	98,222	10.93%	451,549	16.73%
\$350 to 449	148	18.25%	209,103	23.27%	752,719	27.89%
\$450 to 549	189	23.30%	176,216	19.61%	420,905	15.60%
\$550 to 649	170	20.96%	104,325	11.61%	197,378	7.31%
\$650 to 749	89	10.97%	53,943	6%	91,830	3.40%
\$750 to 849	13	1.60%	26,631	2.96%	43,480	1.61%
\$850 to 949	14	1.73%	13,923	1.55%	21,390	0.79%
\$950 and over	32	3.95%	27,868	3.10%	41,847	1.55%
not stated	13	1.60%	27,425	3.05%	84,161	3.12%
<b>TOTALS:</b>	<b>811</b>		<b>898,445</b>		<b>2,698,706</b>	

Source: ABS Census 2021

New Dwelling Approvals	Location	New South Wales	Australia
<b>New Houses</b>			
CY2016	45	28,365	114,202
CY2017	50	28,887	115,479
CY2018	101	29,286	116,247
CY2019	72	22,295	96,090
CY2020	39	24,154	106,908
CY2021	39	27,370	131,983
CY2022	51	22,554	98,280
CY2023 Q1	13	4,158	20,185
CY2023 Q2	13	4,119	19,391
<b>Other Residential</b>			
CY2016	37	42,814	109,132
CY2017	61	41,391	101,014
CY2018	32	33,426	87,056
CY2019	20	24,756	66,792
CY2020	11	22,638	60,514
CY2021	205	29,667	72,853
CY2022	2	23,930	67,151
CY2023 Q1	0	2,703	10,951
CY2023 Q2	4	8,168	16,060

Source: ABS Building Approvals 2021

2021 Motor Vehicle Type	Location	%	New South Wales	%	Australia	%
Passenger	9,397	72.65%	4,421,504	63.08%	14,835,532	60.68%

2021 Motor Vehicle Type	Location	%	New South Wales	%	Australia	%
Light Commercial	812	6.28%	978,759	13.96%	3,515,520	14.38%
Trailers	1,859	14.37%	919,974	13.13%	3,500,200	14.32%
Motorcycles	441	3.41%	270,692	3.86%	913,125	3.73%
Caravans	243	1.88%	161,645	2.31%	697,807	2.85%
Trucks / Prime Movers	117	0.90%	195,830	2.79%	661,228	2.70%
Buses	7	0.05%	26,798	0.38%	96,728	0.40%
Campervans	41	0.32%	21,120	0.30%	74,228	0.30%
Other	18	0.14%	12,699	0.18%	156,223	0.64%
<b>TOTALS:</b>	<b>12,935</b>		<b>7,009,021</b>		<b>24,450,591</b>	

Source: ABS Motor Vehicle Census 2021 2021

2021 Motor Vehicle By Fuel Type	Location	%	New South Wales	%	Australia	%
Petrol	8,239	63.70%	4,314,387	61.55%	14,664,134	59.97%
Diesel	2,353	18.19%	1,487,182	21.22%	5,403,933	22.10%
LPG/Dual Fuel	56	0.43%	41,788	0.60%	235,364	0.96%
Electric	22	0.17%	6,508	0.09%	24,529	0.10%
Other / Unknown / Not Applicable	2,265	17.51%	1,159,156	16.54%	4,122,631	16.86%
<b>TOTALS:</b>	<b>12,935</b>		<b>7,009,021</b>		<b>24,450,591</b>	

Source: ABS Motor Vehicle Census 2021 2021

2021 Passenger Vehicles By Fuel Type	Location	%	New South Wales	%	Australia	%
Petrol	7,503	79.84%	3,754,541	84.92%	12,512,249	84.34%
Diesel	1,672	17.79%	560,880	12.69%	2,035,090	13.72%
LPG/Dual Fuel	38	0.40%	23,792	0.54%	146,947	0.99%
Electric	19	0.20%	5,549	0.13%	20,046	0.14%
Other / Unknown / Not Applicable	165	1.76%	76,742	1.74%	121,200	0.82%
<b>TOTALS:</b>	<b>9,397</b>		<b>4,421,504</b>		<b>14,835,532</b>	

Source: ABS Motor Vehicle Census 2021 2021

2021 No. Motor Vehicles (No. Of Dwellings)	Location	%	New South Wales	%	Australia	%
None	209	3.81%	260,426	9.13%	667,426	7.31%
One	2,176	39.71%	1,096,990	38.45%	3,354,161	36.74%
Two	2,123	38.74%	988,939	34.66%	3,365,807	36.87%
Three	637	11.62%	320,633	11.24%	1,109,906	12.16%
Four or more	335	6.11%	185,989	6.52%	631,303	6.92%

Source: ABS Census 2021